



Community for All

The Arc of
Litchfield County

Fall 2013

School Supply Drive



In partnership with The Rotary Club of the Torrington and Winsted Area, LARC Transition students are sponsoring a book and school supply drive. Items collected will benefit the Greenfield Primary school in St. Elizabeth, Jamaica.

The Rotary Club of the Torrington and Winsted Area will generously ship the items to Jamaica. Dean Smith, a member of LARC's Transition and Camp MOE teams, will personally distribute the donated items in December.

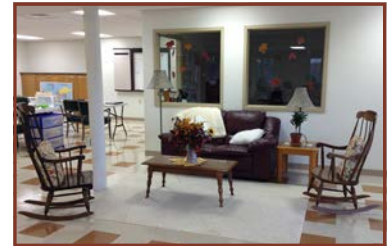
Needed items include books, and school supplies such as notebooks, pencils, pens, and backpacks. Both new and gently used items are greatly appreciated.

Donations are accepted through November 1st in LARC's main lobby (314 Main Street, Torrington). Thank you!



Newly Renovated Space

Students returning from summer break were thrilled to see the beautiful new School to Community classroom space!



The newly renovated lower level of our main building now features a wide open program space, kitchen and laundry areas, handicapped accessible restrooms, and an instructional office.



We wish to thank all those who made this project possible. If you haven't yet made a contribution, it is not too late to donate towards an elevator which will provide access for all!



If you would like to see the new space, please call 860-482-96364 to arrange a tour.

Membership News

There will be a Membership Meeting on Wednesday, November 13th at 6:30 PM at LARC. The purpose will be to vote on revised bylaws and on a new legal name: The Arc of Litchfield County, Inc. Our local identity as LARC will not change.

shares your commitment to ensuring that individuals with disabilities receive the programs and services they deserve. All members of LARC become automatic members of The Arc of Connecticut and The Arc of the United States.

Please consider becoming a member and joining a network that

For more information, visit our website, or call 860-482-9364.

www.litchfieldarc.org
www.facebook.com/larc.ct

To receive this newsletter electronically, email larc@litchfieldarc.org

An affiliated
chapter of



Board of Directors

James Steck, President

Kimberley Brown,
Vice President

Ruth Nadeau Dwyer,
Secretary

Michelle Frankland,
Treasurer

Ann Bowen, Past President

Michael Boe

Karen Dillman-Sebach

Sarah Dziedzic

Maria Gonzalez

Michael McGuffie

Rose Ponte

Pat Rondano

Executive Director

Larry Cassella

44th Annual Probus Club/LARC Auction

*Please join us and prepare
for the upcoming holidays!*

**October 20th, Noon
Coe Park Civic Center**

Live auction featuring new merchandise such as:

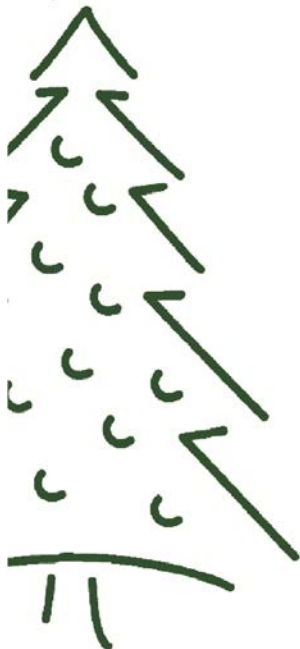
An Ovation Guitar	One Week at Camp MOE	Ski Lift Passes
Antique Chinese Vases	Golf Lessons with Area Pros	Retail Gift Certificates
Stained Glass Window Panels	Restaurant Gift Certificates	Dry Cleaning Services
Overnight at Saybrook Point Inn	Health Club Membership	Handmade Afghans
	Karate Birthday Package	Gift Baskets
	Pearl Necklace & Earrings	AND MUCH MORE!

GIVE LOCAL Greater Waterbury & Litchfield Hills!

On November 12 & 13 you are invited to make a difference in our community through **Give Local Greater Waterbury & Litchfield Hills**, a 36-hour online giving event organized by the Connecticut Community Foundation.

LARC will receive 100% of every dollar donated to us through the "Give Local" button on our website: www.litchfieldarc.org. We will also be eligible for matching funds and prizes throughout the event. We appreciate your support!

12th LARC Annual Festival of Trees



Mark Your Calendars!

Tues, Nov. 26th: Preview Party

Wed, Nov. 27th: Opening Day

Fri, Nov. 29th: Special Olympics Day

Sat, Nov. 30th: Senior Citizens Day

Sun, Dec. 1st: Ecumenical Night

Mon, Dec. 2nd: LARC Appreciation Night

Tues, Dec. 3rd: Grinch Night

Wed, Dec. 4th: Polar Express Night

Thurs, Dec. 5th: Make an Ornament Night

Fri, Dec. 6th: Santa Night

Sat, Dec. 7th: Caroling Night

Sunday, Dec. 8th: Closing Party

The 12th Annual LARC Festival of Trees will be hosted and held at **Valerie Manor Health Care Facility** from Wed. November 27th through Sun. December 8th.

Please join us at a Preview Party on November 26th. Tickets are \$25 and are available by calling 860-482-9364.

Last year \$27,000 was raised to support and enhance the quality of life of LARC program participants. This would not be possible without the generosity and creativity of community members, who have donate a variety of Silent Auction items and transform the lobby of Valerie Manor into a winter wonderland.

To learn more about sponsorship opportunities, or to donate an exhibit, please see our website at www.litchfieldarc.org, or call 860-482-9364.

Social Enrichment Activities

Registration is required for all trips and activities. Please contact Robin Pedone at 860-489-2140 or email RPedone@litchfieldarc.org to check on availability. A full and updated calendar is always available at www.litchfieldarc.org/calendar

Monthly Activities

Bingo: Oct 15, Nov 5

Friday Night Fun: Oct 11, Nov 8, Dec 20

Craft: Oct 12, Nov 9

Movie: Oct 12, Nov 9, Dec 21

October Events

Renaissance Faire: Oct 13

Pumpkintown: Oct 20

Halloween Party: Oct 22

Christy's Restaurant: Oct 29

November Events

Basketball Hall of Fame: Nov 3

Fiddler on the Roof at the Warner Theatre: Nov 10

Westfield Shopping Center & Dinner: Nov 12

Hibachi Grill: Nov 15

Norwalk Maritime: Nov 16

December Events:

Miracle on 34th Street at Landmark Community Theatre: Dec 1

Festival of Trees & Dinner: Dec 3

Light Fantasia-Hartford: Dec 28

Applebee's: Dec 27

Bright Nights-Springfield: Dec 17



Visit www.litchfieldarc.org for the **12th Annual Holiday Wreath Sale** order form! All proceeds will benefit LARC Recreation Programs, including Special Olympics.

LARC is hosting a Coffee-n-Chat on Tues., October 29th at 8 AM. Please join us and start your day off right with a little bit of networking! To RSVP, call the NW Chamber of Commerce at 860-482-6586

Informational Session on Transition Planning

There will be an informational session for educators and parents of students with special needs on Tuesday, October 29th from 6 PM to 8:30 PM at LARC in the newly renovated Transition Program space.

Topics to be addressed are transitioning from high school to

adult life, DDS eligibility and services, available resources, and programs. Parents with younger teenagers are encouraged to attend as it is never too early to begin the planning process.

Presenters include Brian Smith, Developmental Services Program Manager, Individual and Family

Support Division at the CT Department of Developmental Services (DDS), and Katherine Marchand-Beyer, LARC Director of Community Supports and Camp MOE Director.

For more information, or to RSVP, contact Pamela Fritz, Transition Coordinator at 860-482-9364 x35 or pfritz@litchfieldarc.org.



When you include charities in your estate planning, you can leave a legacy and make a difference in the future lives of others. By remembering LARC in your will or estate plan, you will help us to empower individuals with disabilities for generations to come.

For a complimentary booklet, [How to Make a Will that Works](#), please call 860-482-9364.



314 Main Street
Torrington CT 06790

Phone: 860-482-9364

Fax: 860-489-2492

www.litchfieldarc.org

www.facebook.com/LARC.CT

An affiliated
chapter of



We Are The Safety Net
Caring for Connecticut

Our vision, *Community for All*, strives to achieve inclusion for all individuals.

The principles which have guided LARC in its delivery of programs since 1964 are individual empowerment, choice, respect and dignity.

LARC Participants Served as Honorary Crew Members at Lime Rock



LARC was proud to be a part of The Arc Audi Racing Program, as they competed in the Pirelli World Challenge Series at Lime Rock Park on Friday, July 5th. Twenty individuals from LARC served as honorary crew members for RS Werkes, part of Istook's Motorsports.

